

October 7, 2009

Press Information



Contact:

Jennifer Riley

Telephone: +1 313 592-8103

Email: jennifer.riley@mtu-online.com

Agency contact:

Robert E. Sheldon, APR

Creative Communications Consultants, Inc.

Phone: 210-828-1880

Email: rsheldon@cccinc.com

Editor note: To download this news release, go to:
www.cccinc.com/pr/mtuonsite/series1600

MTU Onsite Energy unveils new Series 1600 diesel generator sets

New MTU Series 1600 generator sets extend range of MTU diesel-powered generator sets from 250 kW to 3,250 kW.

Mankato, Minnesota – [MTU Onsite Energy](http://www.mtu.com), a leader in distributed power solutions, introduces its newest MTU diesel-powered generator set covering a range of 250 kW to 600 kW. The new genset is based on the MTU Series 1600 engine, through which MTU's proprietary power range is extended from as low as 250 kW up to 3,250 kW.

The Series 1600 engine is a completely new engine for MTU and is the smallest engine that the company produces. It has all the hallmarks of an MTU engine: exceptional reliability, high power density and fuel efficiency. When combined with



2/5

the completely new design of the generator set package, the result is a compact powerhouse that is ideal for emergency standby and peak-shaving applications.

“The engine’s load acceptance is exceptional,” says Neil Majeski, program manager for the Series 1600 genset. “It is an incredibly stable engine that is very well built. “The Series 1600 engines, from 12V to 6-cylinder inline, will offer an advantage in covering power nodes that were previously sourced from two different engine manufacturers.”

The Series 1600 diesel generator set comes standard with many features that previously required custom ordering. Standard features include:

- EPA Tier 2 certification
- Compliance to ISO 8528-5 testing for transient response at 85% load (as opposed to standard testing at 70% load)
- NFPA 110 one-step rated load acceptance (1 step 100% block load)
- Digital control panels that are UL recognized

In addition, the outlet box on the Series 1600 genset has been designed to incorporate not only the outlet box, but also the breaker and control panels in one streamlined package. Its design allows for the flexibility to switch the control panels and breakers to the right or left depending on the need, and allows the mainline circuit breaker to be installed in a compartment on the right or left side per customer specification. The outlet box can accommodate multiple mainline circuit breakers,



3/5

utilizing both compartments. This is a standard design feature that previously would have required custom engineering.

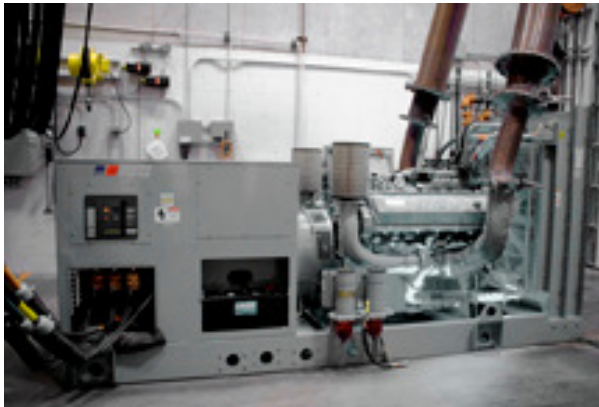
“We are very excited about the outlet box housing everything,” says Majeski. “The design not only offers greater flexibility, but it also gives the genset a well-packaged look with very clean lines.”

The Series 1600 generator sets also have an improved electrical stub-up compared to similar gensets powered by other engine types. The new design allows ample room for connecting cables in the stub-up area, thus making installation easier. Another design advantage is in the mounting of the outlet box. Whereas previous generator set designs mounted the outlet box to the barrel of the alternator, the Series 1600 outlet box is mounted directly to the base of the genset. This significantly reduces the amount of vibration to which the outlet box is subjected, which has a positive effect on the life of the electrical system.

Generator sets based on the 12V configuration of the Series 1600 are currently available in 550 kW - 600 kW power nodes. MTU Onsite Energy has already received several orders for the Series 1600 generator sets, the first of which are scheduled for delivery in December.



4/5



EDITOR'S NOTE: To download this news release and high-resolution photo, go to: www.cccinc.com/pr/mtuonsite/series1600

(MTU-8141)

To introduce the new MTU Series 1600 gensets, this 600 kW unit was used to power a social event for nearly 300 MTU Onsite Energy customers and distributors at the company's headquarters in Mankato, Minnesota.

- End -

MTU Onsite Energy Corporation

MTU Onsite Energy Corp. (formerly Katolight Corporation) is a leading producer of diesel-powered generator sets from 30 to 3,250 kW and natural gas-powered generator sets from 20 to 400 kW for standby, prime power and cogeneration applications. The company also provides automatic transfer switches, paralleling switchgear, controls and accessories for complete power system solutions. Based in Mankato, Minnesota, MTU Onsite Energy Corp. combines the expertise of Katolight and MTU Detroit Diesel Power Generation under one brand to meet the ever increasing distributed power needs of customers in North America and around the world. MTU Onsite Energy Corp. is part of the Tognum Group's business unit, Onsite Energy and Components. For more information, visit www.mtu-online.com

Tognum

With its two business units, "Engines" and "Onsite Energy & Components", the Tognum Group is one of the world's leading suppliers of engines, propulsion systems and distributed energy systems. These products are based on diesel engines with up to 9,100 kilowatts (kW) power output, gas engines up to 2,150 kW, fuel cells up to 360 kW and gas turbines up to 50,000 kW.



5/5

The product portfolio of the “Engines” business unit comprises MTU engines and propulsion systems for ships, for heavy land, rail and defense vehicles, and for the oil and gas industry. The portfolio of the “Onsite Energy & Components” business unit includes distributed energy systems of the brand MTU Onsite Energy, fuel-injection systems from L’Orange, and drive shafts from Rotorion. The energy systems comprise diesel engines for emergency power generation, basic and peak load, and cogeneration power plants based on gas engines, fuel cells and gas turbines that generate both electricity and heat.

In 2008, Tognum generated revenue of more than €3.1 billion and employs more than 8,900 people. Tognum has a global distribution and service structure with 26 fully consolidated subsidiaries, more than 140 sales partners and over 500 authorized dealerships at approximately 1,200 locations. The shares of Tognum AG (ISIN: DE000A0N4P43) have been stock-exchange listed since 2007 and are included in the MDAX.